



---

# ARDEX WPM 320

## (Sheltercoat Retaining Wall – 1 Part)

---

Bitumen Emulsion Waterproofing Membrane

Contains root inhibitors that repel most root growth without killing the plant

Excellent adhesion – can be applied to damp or dry substrates

Compatible with ARDEX bitumen torch applied membranes

---

ARDEX Australia Pty Ltd  
20 Powers Road  
Seven Hills NSW 2147  
Tel: (02) 9851 9199  
Fax: (02) 9674 5621  
Email: [techinfo@ardexaustralia.com](mailto:techinfo@ardexaustralia.com)  
Internet: [www.ardex.com](http://www.ardex.com)

ARDEX New Zealand Ltd  
32 Lane St, Woolston  
Christchurch, New Zealand  
Tel: (03) 384 3029  
Fax: (03) 384 9779  
Email: [techinfo@ardexaustralia.com](mailto:techinfo@ardexaustralia.com)  
Internet: [www.ardex.com](http://www.ardex.com)

# ARDEX WPM 320

## (Sheltercoat Retaining Wall – 1 Part)

### Bitumin Emulsion Waterproofing Membrane

#### PRODUCT DESCRIPTION

ARDEX WPM 320 (Sheltercoat Retaining Wall) is a one component liquid applied, latex modified, bituminous elastomeric waterproofing membrane. When cured it forms a permanently flexible waterproof lining to most building surfaces. It is tough, economical and easy to use. Specially formulated ARDEX WPM 320 contains a premium root inhibitor that repels root growth without killing the root.

Designed primarily for areas covered or exposed to soil, it has excellent adhesion properties, can be applied to damp substrates. ARDEX WPM 320 is waterbased, has almost no odour and is safe to use.

Where used externally, ARDEX WPM 320 should be protected from Ultra Violet light.

#### FEATURES/BENEFITS

- Water based: safe, low odour.
- Easily applied: single pack, high build, long pot life.
- Tough/durable: provides long term protection.
- Contains an effective root inhibitor that repels most root growth that may damage the membrane without killing the plant.
- Excellent adhesion: can be applied to damp or dry substrates.
- Compatible with ARDEX bitumen torch applied membranes.

#### ACCEPTABLE SUBSTRATES

- Concrete, screeds/renders – cured for a min 28 days and 14 days respectively. Alternatively apply a barrier coat of ARDEX WPM 300 (HydrEpoxy 300) as a barrier coating to fresh or wet substrates).
- Masonry & concrete blocks – voids filled, sharp edges and protrusions should be removed to give flush finish.

#### TYPICAL APPLICATIONS

- Below ground tanking (not hydrostatic situations).
- Planter boxes.
- Retaining walls.
- Lapping ARDEX acrylic façade membrane to ARDEX bitumen torch applied membranes.

The product should not be used under tiles. Membranes containing bitumen can cause discolouration and disbonding of tiled surfaces over time.

#### LIMITATIONS

ARDEX WPM 320 will not resist root growth from large trees or other plants placed in close proximity.

ARDEX WPM 320 coated surfaces must not be backfilled until the coating is totally dry and cured, as the coating will fail to cure altogether.

Do not apply ARDEX WPM 320 if the surface temperature is below 8°C or above 32°C. Do not apply if rain is imminent. Do not leave membrane exposed to direct UV rays for more than 3 weeks. Do not use solvent-based adhesive or sealers on top of membrane.

#### BASIC APPLICATION INSTRUCTIONS

##### Surface Preparation

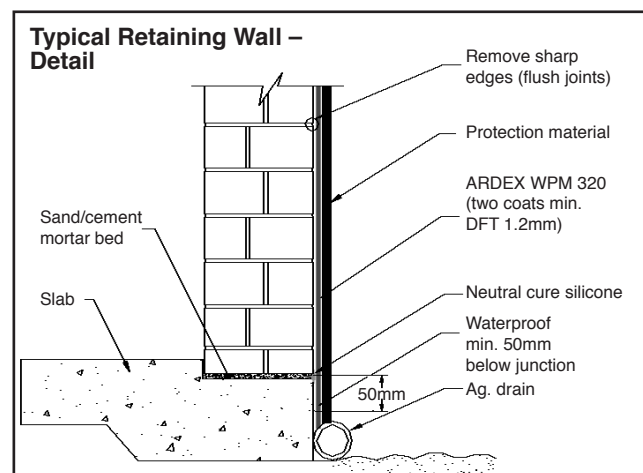
The surface to be coated should be clean, sound and free from oils, greases and flaking paint. New concrete should be cured for 28 days (or a barrier coat of ARDEX WPM 300 (HydrEpoxy 300) applied) prior to application of membrane and the surface pores must be open. All cracks or holes exceeding 2mm are to be repaired before application commences. Surface may be slightly damp but must be free from seeping moisture. Surface to which the coating is to be applied should be smooth with no sharp edges to ensure a uniform film thickness is achieved.

##### Priming

ARDEX WPM 320 is self-priming on most surfaces. Wet or freshly placed concrete surfaces should be sealed with ARDEX WPM 300 (HydrEpoxy 300) in one coat at a coverage rate of 3.0 square metres per litre. Porous substrates such as aerated concrete should be primed with ARDEX WPM 320 mixed with 50% water.

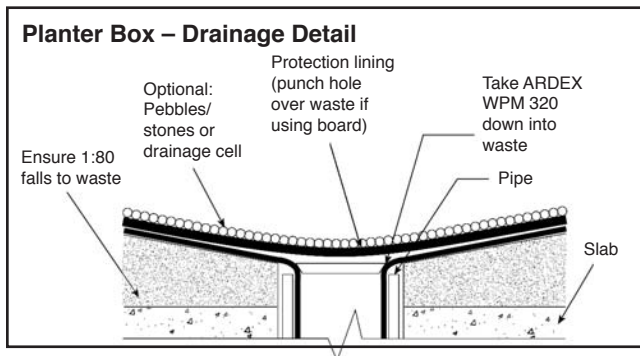
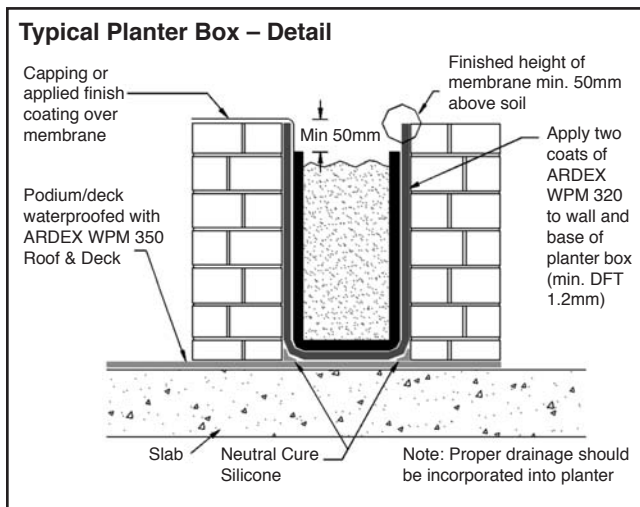
##### Application

Apply a bead of elastomeric sealant to all expansion joints, corners, wall to floor/footing junctions and where movement will occur.



Apply 2 coats of ARDEX WPM 320 at a total rate of 2.0 litres per m<sup>2</sup>, and ensure full coverage with brush or roller. A reinforcing fabric should be used between coats in all vertical and horizontal corners or other possible movement joints. ARDEX WPM 320 may be fully reinforced if required such as over concrete block walls.

When dry, check for pinholes and rectify if necessary.



## PROTECTION

Once the membrane has cured, and prior to backfilling a suitable protection material must be applied over the membrane. ARDEX Protection Boards or Geotextile Fabric covered drainage cell are recommended. The protection boards should be installed using duct tape or other suitable means without puncturing the membrane.

## COVERAGE

1 x 20 litre unit will cover approximately 10m<sup>2</sup> after two coats (recommended total dry film thickness minimum 1.0mm).

## DRYING TIME

Allow 1-2 hours between coats, unless a reinforcement material is used between coats. In this case, the second coat can be applied immediately after the mat has been installed in the wet first coat.

The membrane is fully dry in 24 hours, after which it should be protected with ARDEX Protection Boards or Geotextile Fabric coated drainage cell. Backfilling should not be carried out until full cure is achieved after 7 days.

## SAFETY DATA

ARDEX WPM 320 is non-hazardous and non-dangerous. Do not breathe gas/fumes/vapour/spray. Wear eye/face protection. Use only in well ventilated areas. Keep container tightly closed and in a well ventilated place. In case of contact with eyes, rinse with plenty of water. In event of irritation seek medical advice.

ADDITIONAL INFORMATION IS LISTED IN THE MATERIAL SAFETY DATA SHEET.

## STORAGE

ARDEX WPM 320 is sold in 20 litre PVC Pails. Shelf life is 12 months when stored in the original unopened container, in a dry place at 25°C. Do not store in direct sunlight. Replace lid tightly after use.

## CLEAN UP & DISPOSAL

Clean all equipment in fresh water immediately after use. Remove cured material with mineral turpentine or white spirits. Dispose of containers in compliance with all relevant local authorities, state, and federal regulations.

## TECHNICAL PERFORMANCE DATA

**Appearance & Odour** Thick black fluid, slight odour

**Specific Gravity** Approx. 1.03 g/cm<sup>3</sup>

**Application temperature** 10°C - 35°C

**Drying Time: (@ 23°C, 50% RH)**

**Recoat** 2 – 4 hours

**Hard Dry** 24 – 48 hours

**Tensile Strength: 6 days @ 23°C/50% RH plus 24 hrs at 70°C** 1.8MPa

**Elongation of break: 6 days @ 23°C/50% RH plus 24 hrs at 70°C** 220%

## DISCLAIMER

The technical details, recommendations and other information contained in this data sheet are given in good faith and represent the best of our knowledge and experience at the time of printing. It is your responsibility to ensure that our products are used and handled correctly and in accordance with any applicable Australian Standard, our instructions and recommendations and only for the uses they are intended. We also reserve the right to update information without prior notice to you to reflect our ongoing research and development program.

Country specific recommendations, depending on local standards, codes of practice, building regulations or industry guidelines, may effect specific installation recommendations.

The supply of our products and services is also subject to certain terms, warranties and exclusions, which may have already been disclosed to you in prior dealings or are otherwise available to you on request. You should make yourself familiar with them.

### **ARDEX Australia Pty Ltd**

New South Wales	Ph (02) 9851 9100	Fax (02) 9838 7970
Queensland	Ph (07) 3817 6000	Fax (07) 3881 3188
Victoria/Tasmania	Ph (03) 9308 9255	Fax (03) 9308 9332
South Australia	Ph (08) 8268 2511	Fax (08) 8345 3207
Western Australia	Ph (08) 9256 8600	Fax (08) 9455 1227

### **ARDEX New Zealand Ltd**

Auckland	Ph (09) 5800 005	Fax (09) 5799 963
Wellington	Ph (04) 5685 949	Fax (04) 5686 376
Christchurch	Ph (03) 3843 029	Fax (03) 3849 779

**Technical Services Toll Free: 1800 224 070**

Date: July 2007